

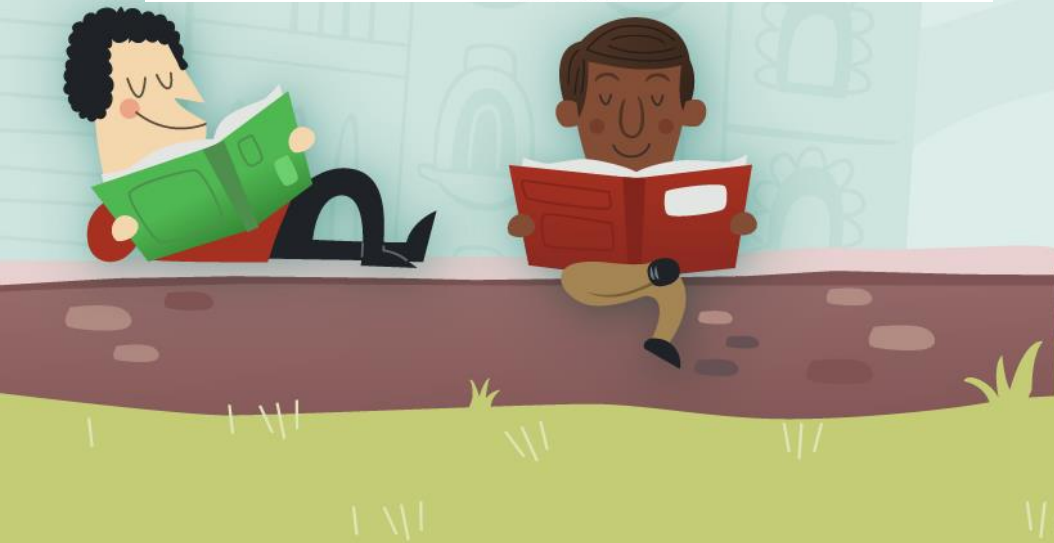


Ormesby Village Infant and
Junior Schools Federation

Reception Parents' Presentation

By Mr. Bradley Young,
Headteacher

www.ormesbyinfant.norfolk.sch.uk



Welcome



- Thank you for choosing our school.
- We are proud of our good reputation and endeavour to build upon our successes. Ofsted in December 2022 praised many areas of our 'Good' school.
- We are always looking forward to improving our provision and ensuring our school remains fresh and challenging.



Reception Staff



- Our Team who will work with your children at different times:
- Mrs. Allen
- Mrs. Davis
- Miss. Forman
- Mrs. Newby



Pupil Voice – Why do you like being in Reception?

- “I like learning outside.”
- “I like watching the counting programme.”
- “I like lunch and snack time.”
- “I like doing jobs.”
- “I like building Lego.”
- “I like chalk writing and pictures.”
- “I like writing love cards to my mummy.”
- “I like the trim trail and reading my books.”
- “I like growing things making things to play with.”
- “I like doing activities on my own.”
- “I love cooking and dressing up.”
- “I love learning new sounds.”



Vision and Ethos



- Our school vision is to ensure we are a nurturing environment underpinned by strong values.
- Our whole school community is a “family” where every child is treated individually and challenged through fantastic teaching to develop their uniqueness and uncover new talents. At Ormesby Village Infant School, we are always **“Learning to Grow and Growing to Learn.”**
- We are a school community that cares for, values and encourages all the children within our care.



Values



- Across our Federation, beginning in Reception, our values as chosen by all stakeholders (Honesty, Friendship, Respect, Togetherness, Aspiration, Resilience, Nurture and Family) are taught in class, in Good Work collective worships and at other times throughout the day.
- They underpin all practice within the school and adults working in school model these values at all times.



Welcome Packs



- School Brochure
- All About Me Books
- Home/School Agreement (Inside Brochure)
- School Admission Forms/Contact Details
- Individual Healthcare Plan/Allergy/Additional Needs
- Consent Forms/Permissions/Photographs
- Information on Starting School Arrangements (This may be sent out later to you)
- Please fill any forms in and hand them back to us or post them to us.



Safeguarding



- Your children will be very safe here with us.
- As trained staff we have a duty of care to all our children.
- We must report any issues, which we feel contravene the child protection guidance we receive.
- Key policies supporting this and other areas of the school are all available via our school website.



Additional Needs, Nurture & Intimate Care



- Some children may have additional needs or require support. Our Reception staff are highly experienced and will support you and your child.
- We have a dedicated SENCo, who works closely with staff and parents to ensure children are well supported.
- We have fantastic nurture provision and this is an area of the school we are expanding.
- **Toileting - We would prefer that our Reception children are toilet trained before they join us,** however we appreciate such young children often have accidents or have additional needs delaying this. We encourage all parents to work on this over the Summer holidays with their children.
- Our staff follow an Intimate Care Policy when dealing with any issues of this nature.



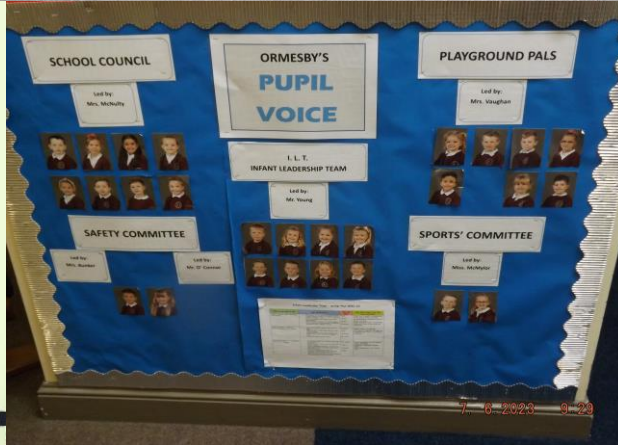
Early Years Pupil Premium Funding and Free School Meals



- All Reception and KS1 children are entitled (as it stands) to a free school meal, hot or packed. However, a home packed lunch can still be provided. Norse are our catering providers, so please enjoy the meals they will be cooking. Children are often involved in meal choices and themed days/competitions will be run to make lunches even more appealing.
- Some families may be eligible for extra Government funding.
- Looked After Children/Low-Income Families/Families in Receipt of certain Benefits/Parent in the Military.
- If you feel you may be one of those families, please speak to us during coffee/tour of the school and we will be happy to give more information.
- [Early years funding - Schools \(norfolk.gov.uk\)](https://www.norfolk.gov.uk/early-years-funding-schools)



Working with Parents



- We love to work closely with our parents:
- Seasonal Events – Reading & Writing Cafes/Sports' Days/Performances
- Funky Fingers/Tapestry/Phonics Workshops
- Professional Skills – Can you visit and share your job with the pupils? Secret Reader.
- Helpers and Volunteers – Could you offer support on trips?
- Attendance and Illness – Please ensure you phone in if your child is not going to be in. To avoid a spread of infection and to keep everyone safe please ensure you adhere to the quarantine period for more infectious illnesses, particularly sickness and diarrhoea (Website for more information under the Parents tab)
- Class Dojo, Tapestry and Blog – The class blog is a weekly review of highlights.
- Parking – Please park courteously and sensibly for our neighbours. Please ensure your drive safely around our schools.
- We cannot help if we do not know, so come and talk to us.



Extra-Curricular Activities & Childcare

- We offer several extra-curricular clubs, as well as an after-school childcare service at Ormesby, which currently operates from Monday to Wednesday.
- This sports-orientated and active After-School Club runs from 3:15PM to 5:00PM on Monday and Wednesday and until 4:45PM on Tuesdays. Staff operate a walking bus between the Infant and Junior schools to enable pupils from both schools to attend it.
- We have an interactive outdoor Reception area.
- We have a Gymnastics Specialist, Music specialist and termly enrichment sport sessions. We have access to our own outdoor nature area all year round and have had a Bushcraft specialist in to

As the children become more familiar with the routines of the school, there will be the opportunity to attend clubs. We have had Fencing, Quidditch and Dance.

All charged services must be paid for promptly using our cashless system, ParentMail.



Gallery



Transition Arrangements

- Letters/Emails will be sent to you to let you know what time to bring your child in on Transition Day Monday 3rd July 2023. This will be for a morning.
- Information will be communicated via email. Rest assured we will support your child through a successful transition.
- Children will begin in September with a staggered start. Some will have a week of mornings, others a week of afternoons. Then, they will switch before coming in full-time.
- Mrs. Allen will be able to provide further information via email if you need to ask them anything. Addresses on the next slide.



Thank you and we look forward to seeing you and your child soon.

Please feel free to ask us any questions.

Mrs. Allen - mrsallen@ormesbyinfant.school

Office - office@ormesbyinfant.norfolk.sch.uk

